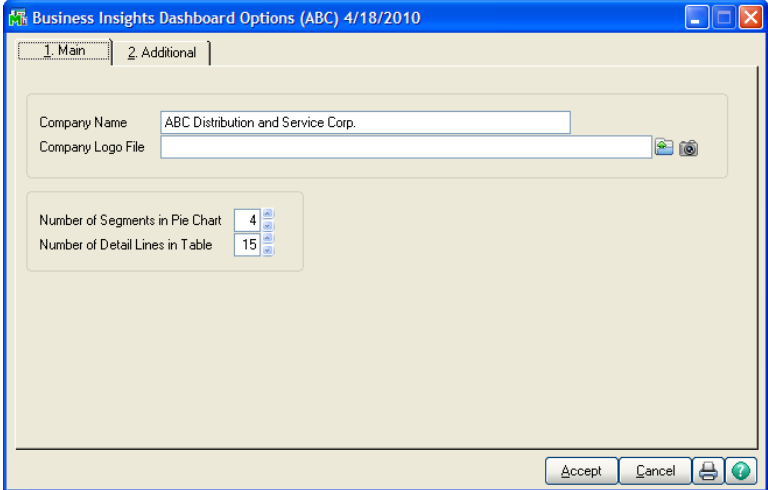
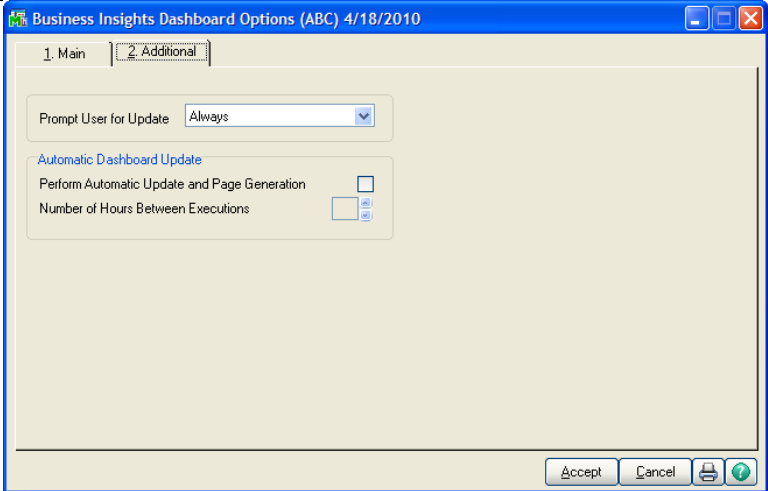
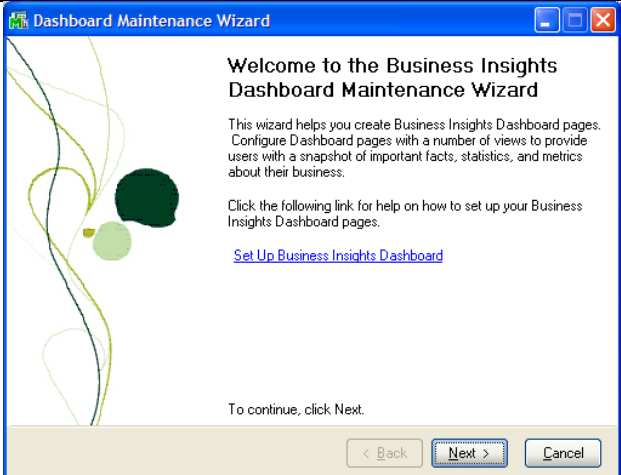


# Professional Software, Inc.

## Business Insights – Dashboard

Sage MAS 90 / MAS 200

April 20, 2010

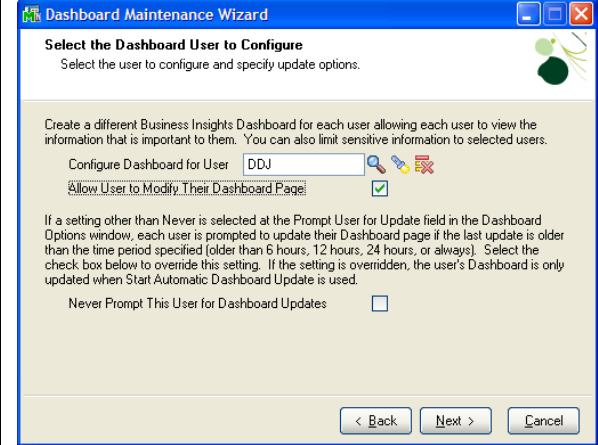
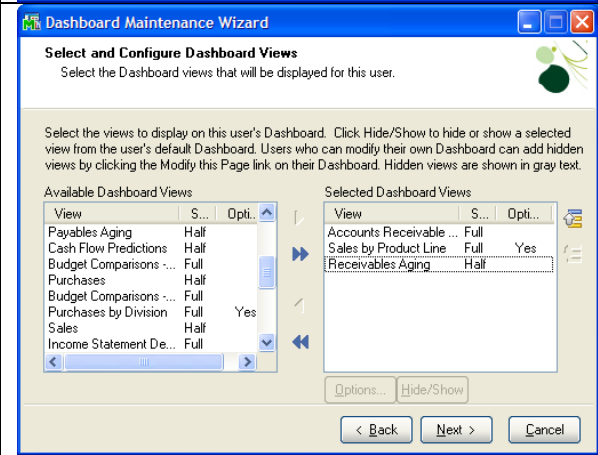
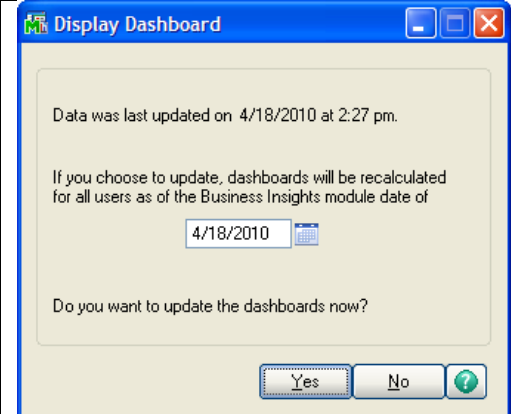
Business Insights – Dashboard	
<b>Dashboard Options</b>	
	Use the Dashboard Options task to set the company name and insert a logo file if you have one.
	Set the default settings for updating the statistics in the dashboard.
<b>Dashboard Maintenance Wizard</b>	
	The Dashboard Wizard will enable you to customize the dashboard by user.

# Professional Software, Inc.

## Business Insights – Dashboard

Sage MAS 90 / MAS 200

April 20, 2010

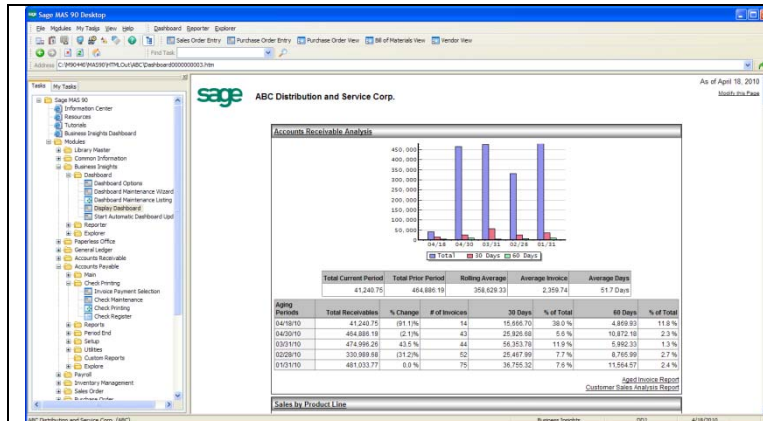
		<p>Select each user who will have access to the dashboard and select the features that will be available.</p>
		<p>The full list of dashboard views is on the left. Only select the views you want each user to have access to. Highlight views on the right of the screen to move them up or down in the sequence.</p>
<b>Display Dashboard</b>		
		<p>When launching the dashboard we asked the system to prompt the user to update the data grids. The user can decide if an update is needed each time the dashboard is launched.</p>

# Professional Software, Inc.

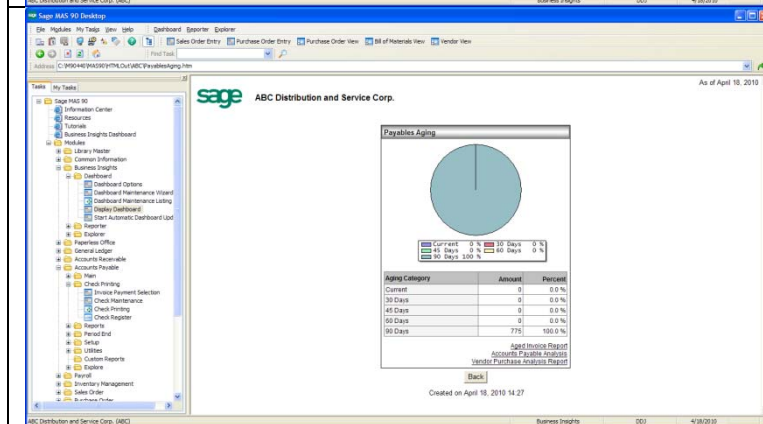
## Business Insights – Dashboard

Sage MAS 90 / MAS 200

April 20, 2010



The web portion of the MAS 90 or MAS 200 menu will be populated with the reports.



There are numerous hyperlinks to single out a graph or to launch MAS 90 / MAS 200 inquiries or reports.